A black and white photograph of a classroom. Several students are visible, with their hands raised in the air, suggesting an interactive or participatory activity. The background is slightly blurred, focusing attention on the students' actions. The text is overlaid on this image.

**School Attendance:
Utilizing Early Warning
Truancy Prevention
Processes in a Tiered
Dropout Prevention
Support Model**

Why Operation Graduation?

- Alabama's high school graduation rate is 61.3% - 43rd in the nation



- Alabama Adults in 2000
1 in 4 did not have a high school diploma
- Alabama's 2007 dropouts
an additional \$6.7 billion earned in their lifetimes had they graduated

What does research say about poor attendance as a dropout indicator?

Truancy, according to the US Department of Education, is the first sign of trouble; the first indicator that a young person is giving up and losing his or her way. When young people start skipping school, they are telling their parents, school officials, and the community at large that they are in trouble and need our help if they are to keep moving forward in life.

Each day of absence in ninth grade is associated with a dramatically reduced likelihood of graduating.

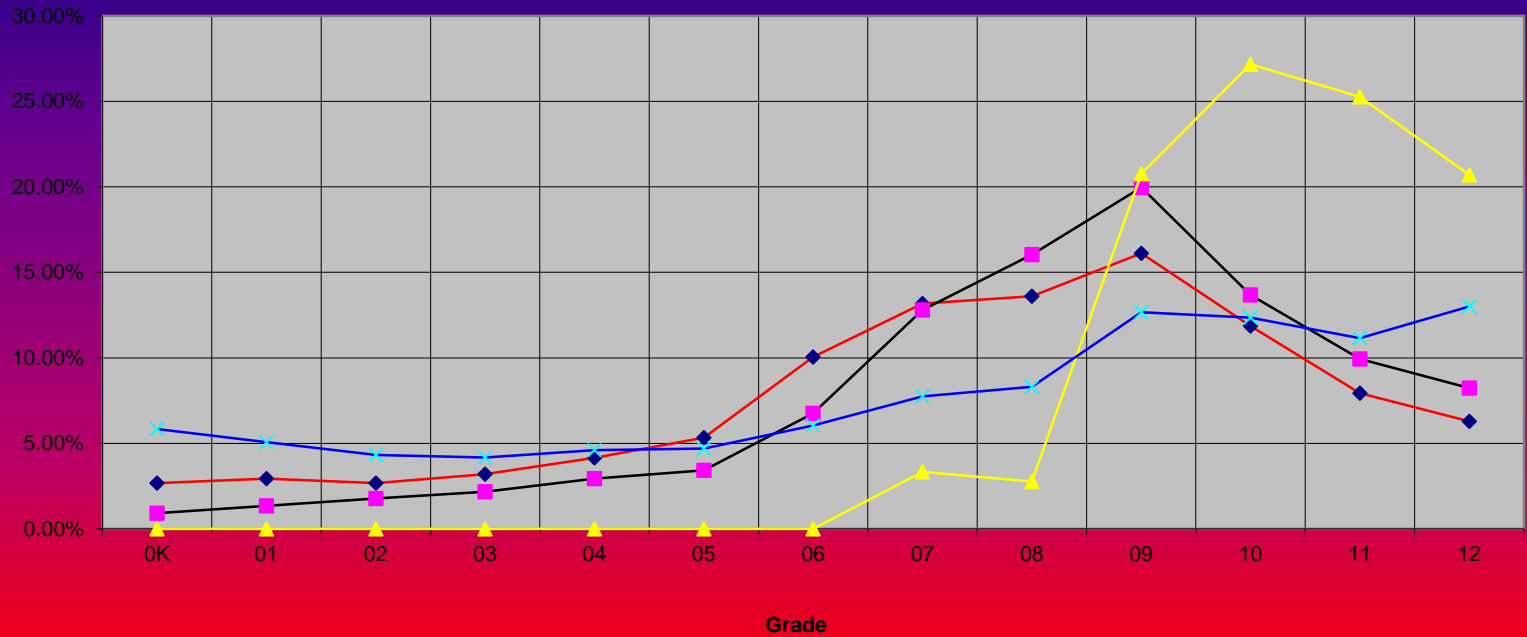
- 0-4 days out – 87% chance of graduating
- 5-9 days out – 63% chance of graduating
- 10-14 – days out – 41% chance of graduating
- 15-19 - days out – 21% chance of graduating
- 20-24 – days out – 9 %chance of graduating
- 25-29 – days out – 5% chance of graduating
- 30-34 – days out – 2% chance of graduating
- 35-40 – days out – 1% chance of graduating

What Works?

1. Relationship-building.
2. Strong and clear attendance policies.
3. Intensive school interventions .
4. Establishing ongoing truancy prevention programs for school .
5. School staff that are trained, committed, and supported to provide high quality, responsive services and keep at-risk youth in the educational mainstream.
6. Family counseling that recognizes and builds on the family's own strengths and resources, with the overall goal of increasing attendance.

Combination 2010-2011

Combination 2011



◆ Discipline 2010 ■ Safety 2010 ▲ Dropout 2009 × Truancy 2010

A grayscale photograph of a classroom. In the foreground, the back of a young girl with pigtails is visible, her right hand raised. To her left, another student's arm is raised. In the background, several other students have their hands raised, indicating an active learning environment. The text "Activity – Data on Display" is centered over the image in a black serif font.

Activity – Data on Display

It's The Law!

Code of Alabama (1975) §16-28-3

Every child between 7 and 17 years of age

Code of Alabama (1975) §§ 16-28-19 and 16-12-18

Employment of Attendance Officer

Code of Alabama (1975) §16-28-12(c)

Complaint/petition against the parent

State and District Attendance Trends

Alabama Administrative Code 290-3-1.02(7)(c)

- Truancy Definition
 - Written excuse within 3 days of absence
 - 7 unexcused absences within a school year constitute a student being truant
 - Interagency Committee on Youth Truancy Task Force
 - Early Warning Truancy Prevention Program

LEA Policy /Procedures

<http://www.schooltube.com/video/59e292977d6f41f6b255/Attendance-Video-Rochester-City-School-District>

School/District Policy and Procedures

Code of Conduct

- 1. What is the school response to excessive excused absences?*
- 2. What is the school response to excessive tardies?*
- 3. What is the school response to unexcused absences?*
- 4. When is a student referred to Early Warning?*
- 5. Who conducts Early Warning?*
- 6. What steps are taken after Early Warning if student truancy continues?*

Early Warning

Shelby County School's Response

(Early Warning Handout)

Early Warning since late 1980's

2008 Juvenile Code of Alabama changes

Partnership with Shelby County DA's Office, Juvenile Court
and Shelby County Schools

Steps In Truancy Intervention



**Juvenile Court
Petition
Level**
(Probation, Fine)

**District Level
Early Warning/Pre-
Petition Level**
(Alignment of Resources)

School Level Interventions
(Phone Call, Letter, Conference)

Supporting Family Initiative

Intensive intervention for at-risk student – designed for the **family** not just the student.

SFI Partners

- Parent Project
- Spirit of Hope
- Gateway Counseling
- Family Connections
- DAY Program
- Shelby County Family Resource Center
- Bradford Health System
- Children's Policy Council
- JPO, DHR, DA

Early Warning Program Procedures

Shelby County Schools

Updated 7/16/09

Referral Process – Attendance

All Absences

Phone call notification (PhoneMaster or Shelby County Notification System) from school to make parent aware of absence and remind parent to provide a written excuse for the absence.

2nd Unexcused Absence

Local school mails 2-day unexcused letter which provides state laws and attendance regulations.

3rd Unexcused Absence

Local school administrator conducts a parent meeting to review student's attendance record, complete Pre-Referral Conference & Acknowledgement Form and explain early warning referral process upon the 5th unexcused absence. In addition, copy of letter from DA to Superintendent MUST be received by parent.

5th Unexcused Absence

Local school completes EW Referral (attach Pre-Referral Conference Form and detailed attendance profile) and submits to Student Services. Juvenile Court Services communicates (to the parent/legal guardian) the assigned date and time to appear for Early Warning Court

Two Additional Unexcused Absences occur

Local school completes 2nd EW Referral (attach detailed attendance profile) and submits to Student Services.

Referral Process – Conduct

All Discipline Referrals

Parent notified of all discipline referrals and subsequent detentions/suspensions.

2nd Class II or 1st Class III/IV resulting in a suspension

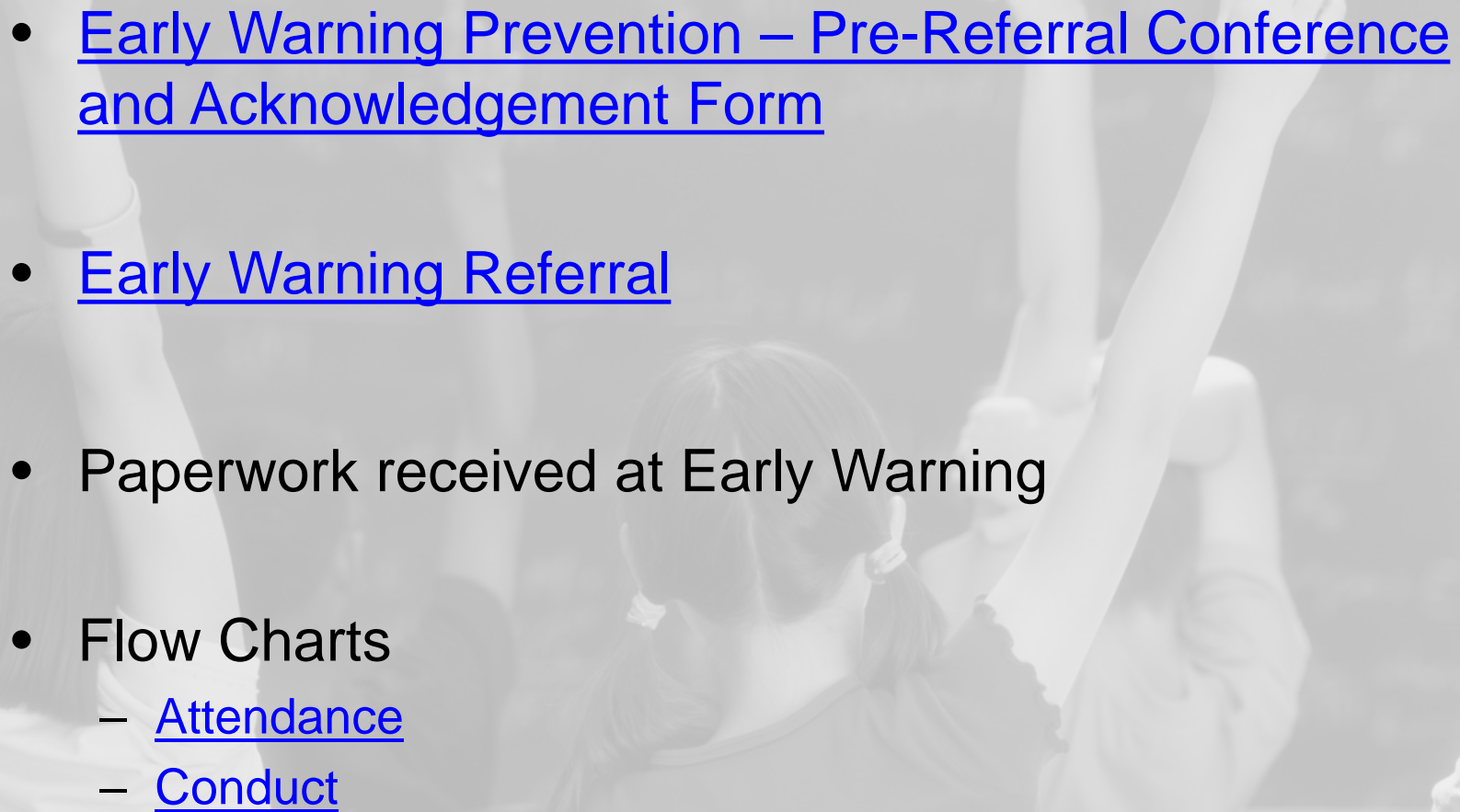
Local school administrator conducts a parent meeting to discuss student's disciplinary concerns, completes Pre-Referral Conference & Acknowledgement Form and explain early warning referral process upon the next major discipline offense. In addition, letter from DA to Superintendent MUST be received by parent.

Subsequent suspensions or Alternative School placement

Local school completes EW Referral (attach Pre-Referral Form and detailed discipline profile) and submits to Student Services. Juvenile Court Services communicates (to the parent/legal guardian) the assigned date and time to appear for Early Warning Court.

Additional suspensions or Alternative School placement

Local school completes 2nd EW Referral (attach detailed discipline profile) and submits to Student Services.

- 
- Early Warning Prevention – Pre-Referral Conference and Acknowledgement Form
 - Early Warning Referral
 - Paperwork received at Early Warning
 - Flow Charts
 - Attendance
 - Conduct

School Level

Parent notification

Face to face parent conference
home visit, parent handbook

Student interventions
incentives, rewards, activities

Driver License

Attendance Contracts

District Level

Who?

Procedure

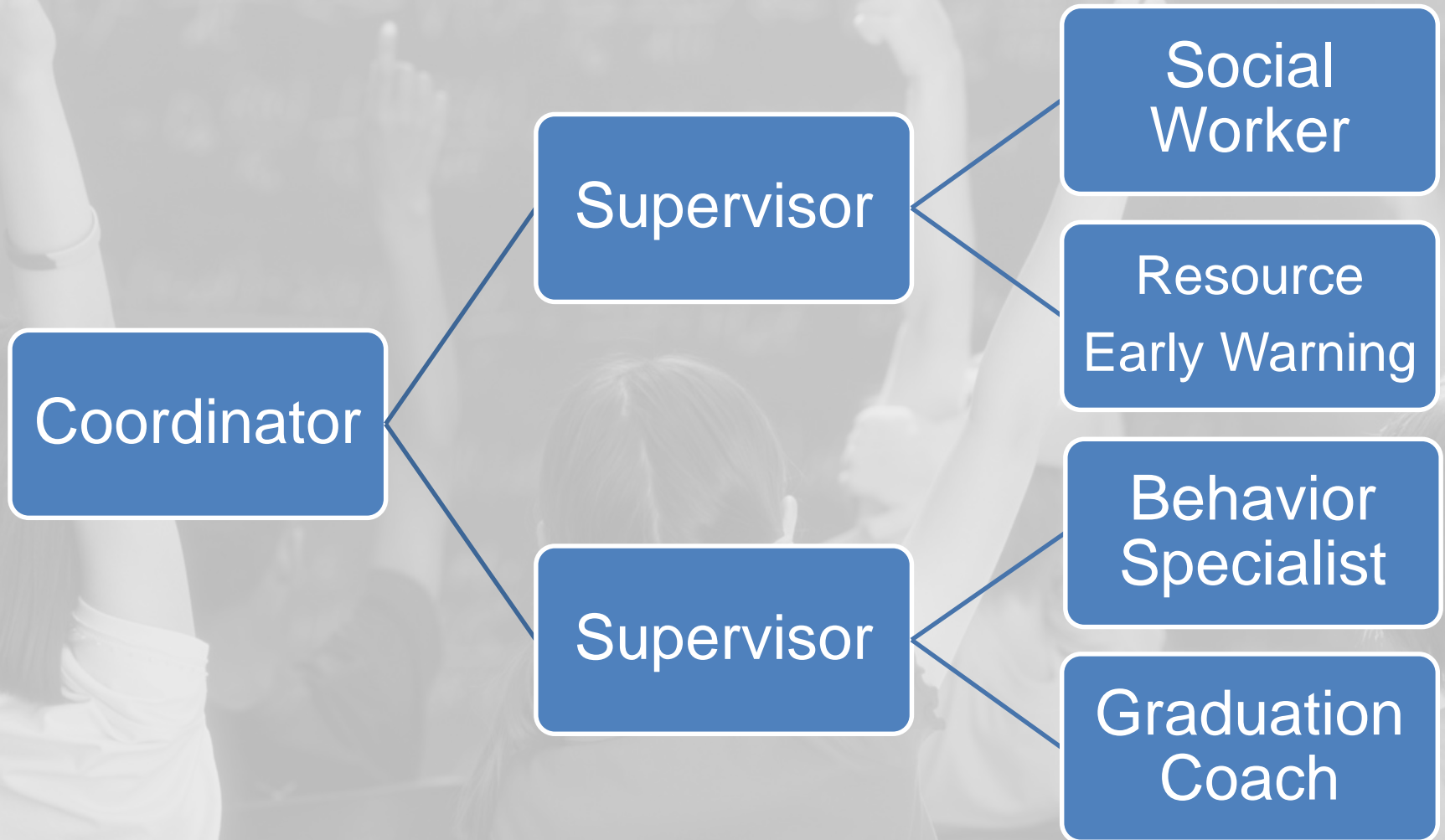
Early Warning Session

Designated day and time

Juvenile Judge, DA, DHR, SCBOE, JPO

Subsequent absences/referrals

Student Services Department



Shelby Count's EW Court

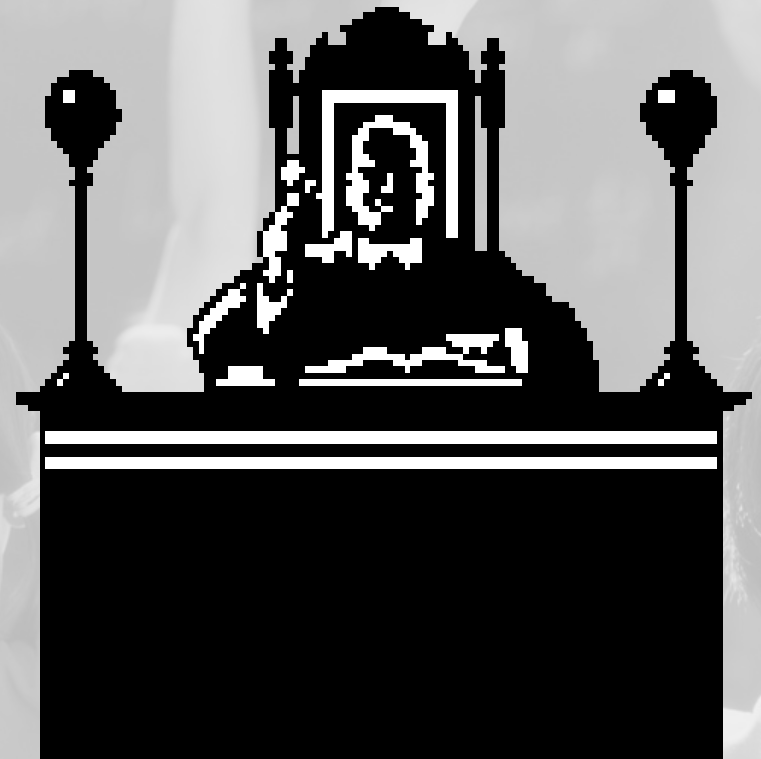
The Honorable Jim Kramer, Juvenile Judge

Leanne Rigney, JPO

Beth Glasgow, SCBOE

Assistant District Attorney

Director, DHR



Resources

<http://www.alsde.edu/html/sections/faqs.asp?section=70&sort=2&footer=sections>

<http://www.alsde.edu/search/default.aspx?query=state%20attendance%20manual>