



# Prepping for PowerSchool

Lane Rushing

Rae Ann Cook

Jennifer Lindsay

# Agenda

- Welcome
- Key Milestones
- Statewide Implementation
- Configuration Survey
- Key Points
- Project Plan
- Other Products
- Preparation
- Resources
- Communication
- Questions and Answers



# Meet the Trainer

- Lane Rushing,  
Alabama Program  
Manager
- Jennifer Lindsay,  
Alabama Program  
Director
- Rae Ann Cook,  
Alabama Technical  
Program Manager



Jennifer



Rae Ann

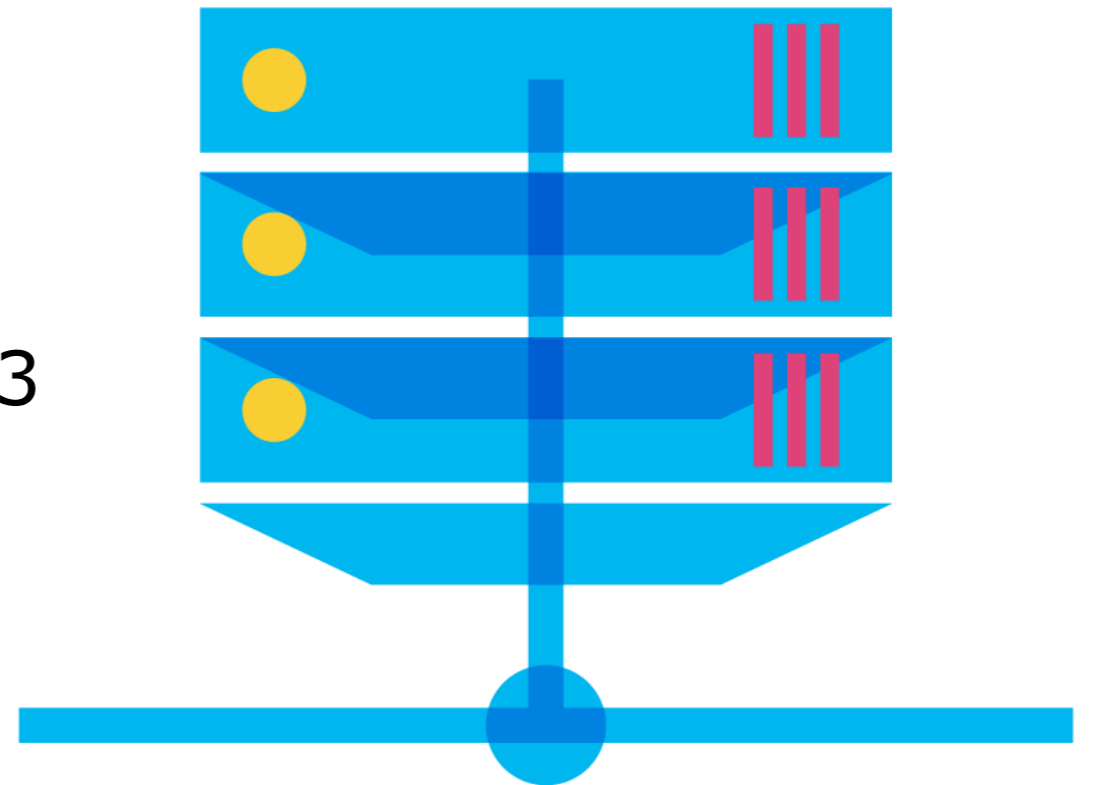


Lane

# AL Key Milestones

Import dates:

- SIS Configuration Surveys
  - Start – November 4, 2019
  - LEA specific start times vary
- SIS Implementation
  - Phase I – 2020 Q1
  - iNow Data Cutoff – June 5, 2020
  - Phase II – June 6 through July 13
- PS Go Live – July 13, 2020



# Alabama Statewide Implementation

- Included in State Contract:
  - Student Information System (PowerSchool SIS)
  - Professional Learning (Faculty/Staff LMS)
  - Special Programs (SpEd, RTI, 504, ELL)
  - Analytics
  - Schoology (Student LMS)
- Ancillary products/purchases outside of the State Contract:
  - Test Server (optional – PS hosted or LEA hosted)
  - Assessment
  - Enrollment
  - Talent
  - ERP
  - Custom Form Creation

# Configuration Survey

## Pre-Configuration/Beginning Implementation

- Assigned a SIS Implementation Specialist (Irene Vermeulen, Vince Piscopo, Brian Mueller, Brad Catalan)
- Example: Limestone County:  
<https://app.smartsheet.com/sheets/xV733Xx5CVgH4Q3GC4gG2grHmfX5xw9f6GPw4VR1?view=grid>
- This Configuration Survey drives the setup of your new PowerSchool SIS server



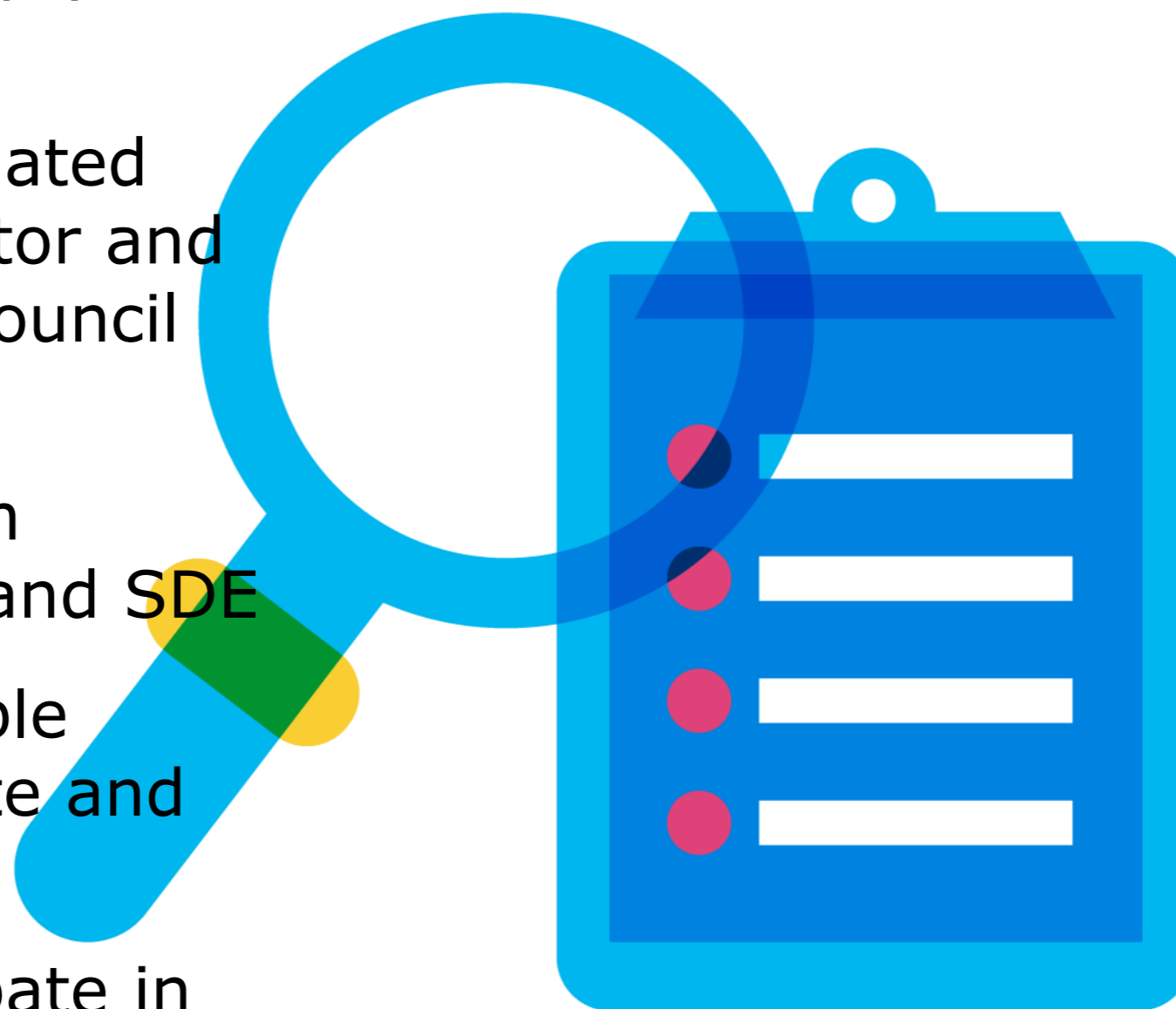
# Key Points

- Implementation Begins (Phase 1/Q1)
- Your PowerSchool SIS Implementation Specialist will reach out to begin validation and Overviews
- You will track implementation progress along with us
- Example: Limestone County:  
<https://app.smartsheet.com/sheets/F3Wc36Jc69XCw5928X62669pJfqV84FV3HrWGRRm1>
- 3<sup>rd</sup> Party Integrations



# Preparation

- Clean and prep your data!
- Have a designated data coordinator and district data council
- Read relevant materials from PowerSchool and SDE
- Attend available training- onsite and virtual
- Join & participate in the ALET ListServ
- Be open to change and get engaged!





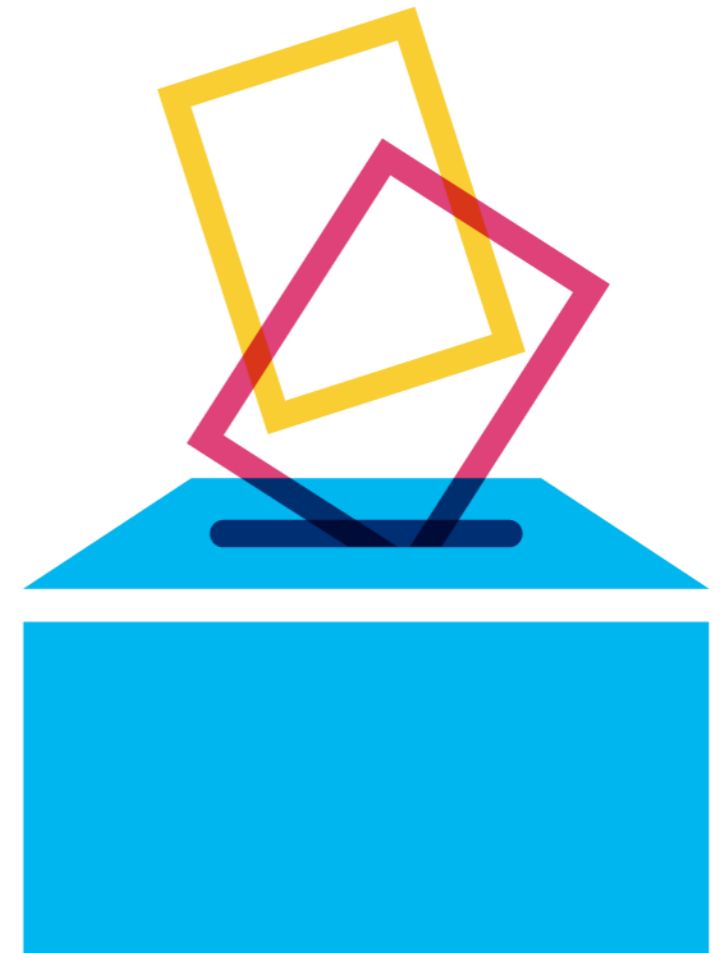
# Resources

- [State PowerSchool Resources](#)
- [FAQ – PowerSchool Migration](#)
- [FAQ Entry Form](#)
- [PowerSource PD+ \(SIS centric\)](#)
- [PowerSchool Community \(other products\)](#)



# Communication

- We are working in conjunction with SDE to produce and publish project informational content. This content is posted on the ALSDE/PS site.
- Is there additional information your district needs?
- Are the right people (e.g. Data Coordinators) getting the information they need?



# Questions and Answers





PowerSchool