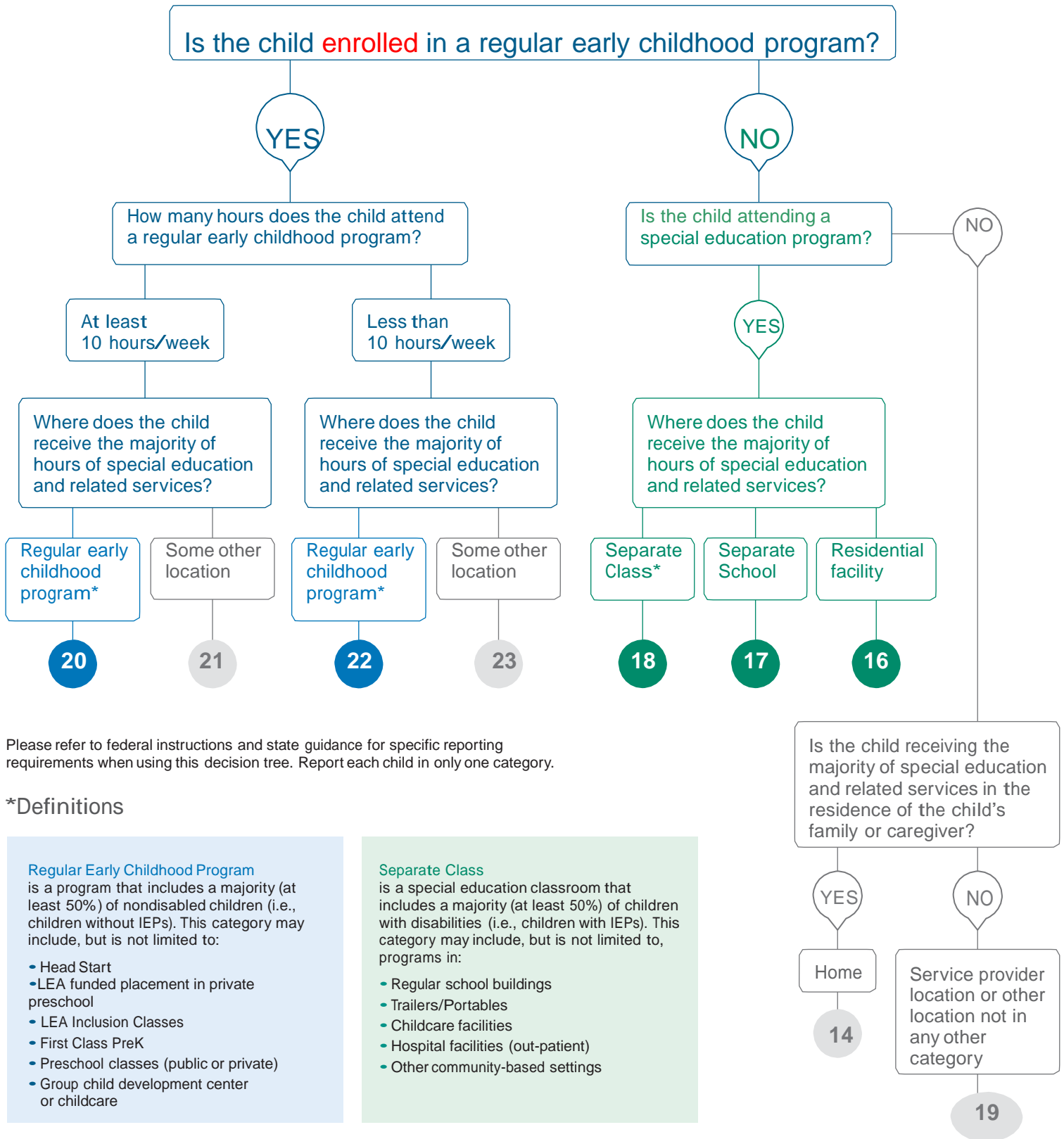


# Determining Educational Environment for Alabama's Preschool Students with Disabilities



Please refer to federal instructions and state guidance for specific reporting requirements when using this decision tree. Report each child in only one category.

## \*Definitions

### Regular Early Childhood Program

is a program that includes a majority (at least 50%) of nondisabled children (i.e., children without IEPs). This category may include, but is not limited to:

- Head Start
- LEA funded placement in private preschool
- LEA Inclusion Classes
- First Class PreK
- Preschool classes (public or private)
- Group child development center or childcare

### Separate Class

is a special education classroom that includes a majority (at least 50%) of children with disabilities (i.e., children with IEPs). This category may include, but is not limited to, programs in:

- Regular school buildings
- Trailers/Portables
- Childcare facilities
- Hospital facilities (out-patient)
- Other community-based settings