

The background features a dark blue field with several overlapping, semi-transparent arrows in shades of blue and red, all pointing towards the upper right. Two white outlines of the state of Alabama are positioned diagonally, one above the other, framing the central text.

**MEGA 2025**

**ELEVATING ALABAMA'S FUTURE**

Leading with Vision, Inspiring with Action

# Keynote Speakers



**Dr. Eric Mackey**  
**State Superintendent of  
Education**



**John Maxwell**  
**NY Times Best-Selling Author**





# Be the One

Written by: Michelle Walker

Performed by:  
Saraland Middle School Choir





Dr. Johnny Whaley

## School Safety: Rules, Regulations and Responsibilities Relevant to the new Safety Law

2025 MEGA  
CONFERENCE  
Pre-Conference Session

Join Dr. Johnny Whaley for an informative session about the School Security Act.

In this session, you will receive important updates and insights regarding all aspects of this new safety law and its implications for your school.

Attendees will leave with essential information about the law, which went into effect on October 1, 2024.

**Don't miss out!**



# Dr. Johnny Whaley

Pre-Conference Session

Monday, July 14, 2025



**Be Pro Be Proud**



# Early Bird Sessions

ALSDE PRESENTS

## MONEY TALKS: A DISCUSSION ON FUNDING STRATEGIES



JOIN  
EXPERTS  
FROM

- Federal Programs
- Career Technical Education
- Instructional Services
- Alabama Reading Initiative
- Educational Technology
- Office of Mathematics Improvement
- AMSTI
- Special Education
- Office of Extended Learning

TUESDAY, JULY 15, 2025  
7:30 A.M. - 8:15 A.M.  
BON SECOUR II

Curious about Alabama's Education System?

## Join the open discussion with the **ALSDE EXECUTIVE TEAM**



**ANGELA MARTIN**  
Deputy State Superintendent  
Division of Instruction



**ARTHUR WATTS**  
Deputy State Superintendent  
Division of Administration  
and Finance



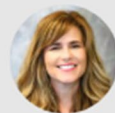
**CHUCK MARCUM**  
Chief of Staff



**DR. AUTUMN JETER**  
Assistant State Superintendent  
Support Services



**SHANTHIA WASHINGTON**  
Assistant State Superintendent  
Evaluation, Accountability, and  
Support



**DR. MELISSA SHIELDS**  
Assistant State Superintendent  
Student Learning



**DODD HAWTHORNE**  
Assistant State Superintendent  
Career and Technical  
Education/Workforce  
Development

Wednesday, July 16th  
7:30 a.m. - 8:15 a.m.  
Bon Secour II



DON'T MISS!



## Maxwell Leadership iLead *the Power of Memorable Images and Meaningful Conversation*

The iLead program by the Maxwell Leadership Foundation is a values-based leadership development program specifically designed for students. It emphasizes the use of memorable images to enhance the understanding and recall of leadership values.

• **Images as anchors for values:** Each leadership characteristic or value in the iLead curriculum is paired with an image to help students remember and connect with the concept.

• **Facilitating meaningful conversations:** The iLead program utilizes a peer-to-peer format where students take turns facilitating discussions around these values-based lessons. This promotes meaningful conversation as students share their perspectives and learn from one another.

• **Enhanced learning and application:** By using memorable images and engaging in discussions, students are better able to grasp and internalize leadership concepts, leading to practical application in their own lives and communities.

• **Building character and confidence:** The combination of values-based learning, visual aids, and facilitated discussions helps students develop character, confidence, and collaboration skills.



**MEGA EARLY BIRD SESSION**  
**Thursday, July 17 · 7:30 - 8:15 AM**  
RIVERVIEW/BON SECOUR II

# 28 Tracks



- Arts
- Assessment
- Career Tech
- Classroom Management
- Certification
- Data-Driven Decision Making
- Educational Technology
- Educator Preparedness
- English Language Arts
- English Learners
- Federal Programs
- General Pool
- Gifted Education
- Instructional Services
- Literacy
- Mathematics
- Mental/Physical Health & Wellness
- Nursing
- Office of School Improvement
- PowerSchool
- School Counseling and Guidance
- School Culture and Safety
- School Library
- Science
- Social Studies
- Special Education
- Student and Behavior Support Systems (PBS, RTI, MTSS)
- World Languages





# Over 400 Presenters





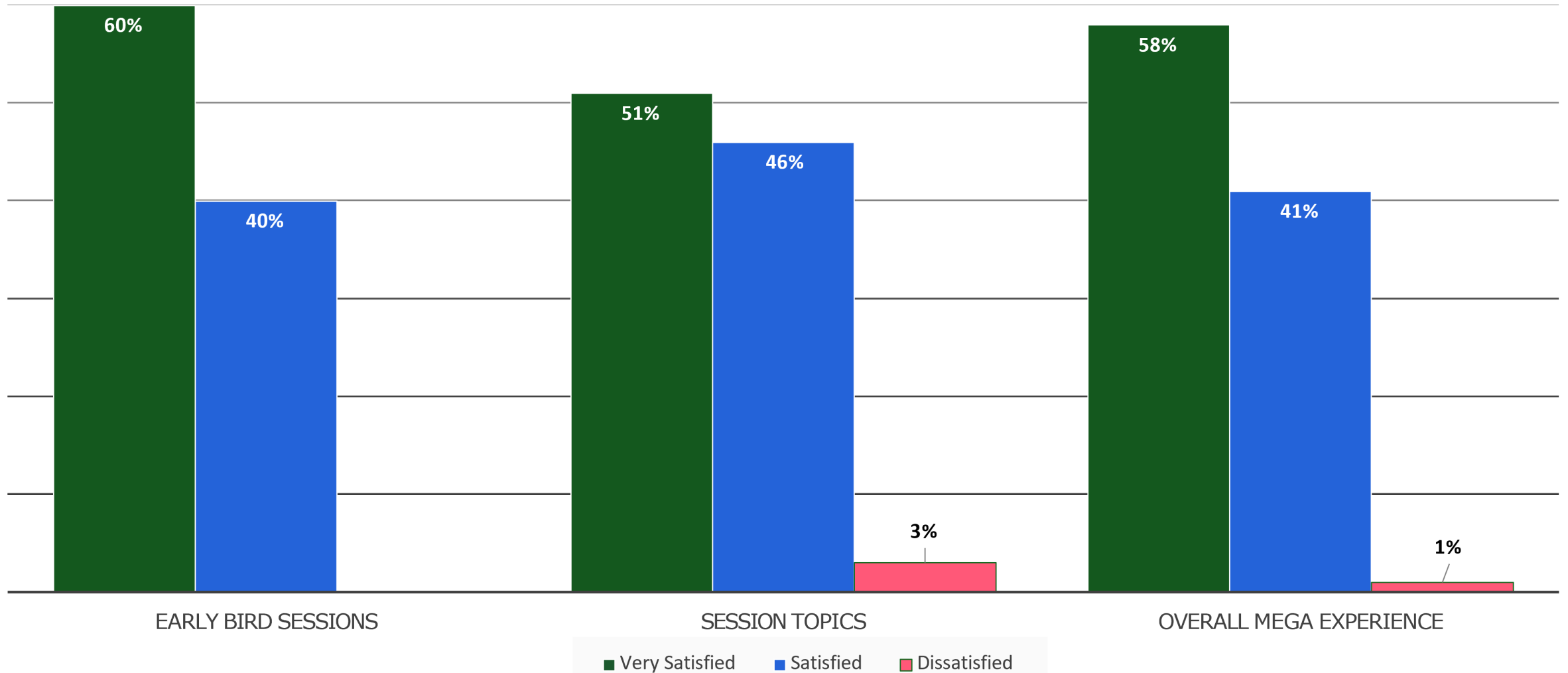


# 3,290 Attendees & Over 500 Sessions



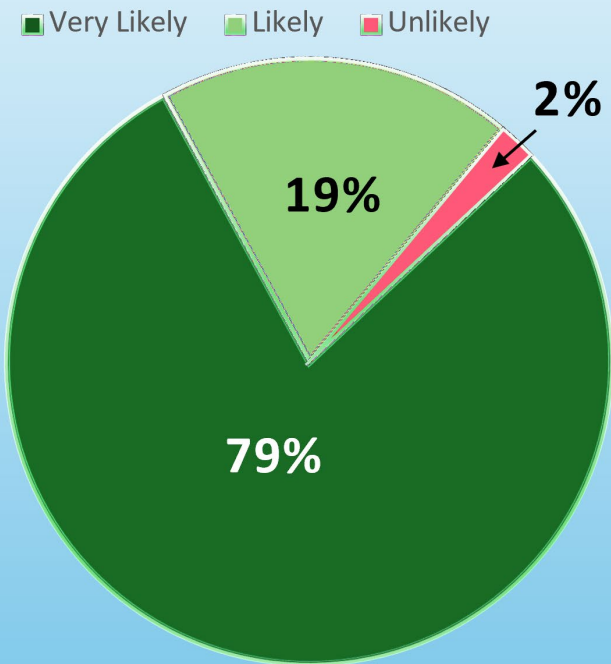


## Preliminary MEGA 2025 Evaluations

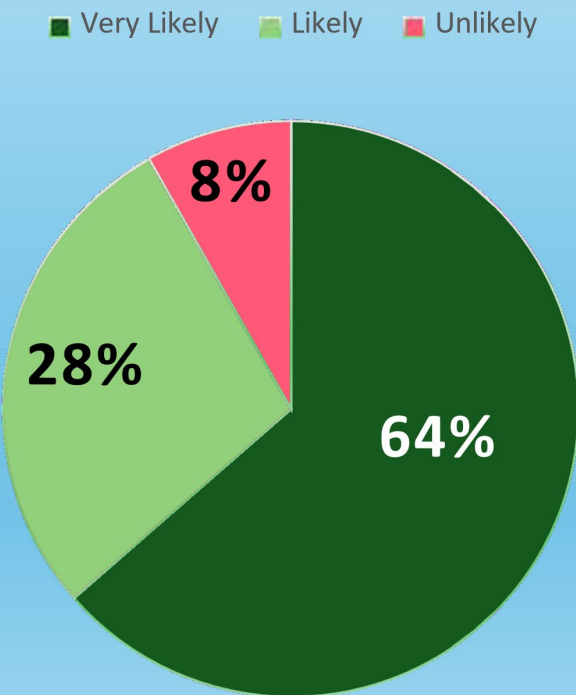




# LIKELIHOOD OF USING/APPLYING KNOWLEDGE ACQUIRED



# ATTENDING MEGA NEXT YEAR





Planning for MEGA 2025



# MEGA Lead Team Members

Angela Martin- Deputy Superintendent

Barry Blackwell- Contact Mobile Properties

DaLee Chambers- Conference Keepsakes

Maggie Hicks- Presenters/Facilitator Packets

Kesha Hooks- Registration Setup & Tech Concerns

Molly Killingsworth- Presenter Contracts/Scheduling Sessions

Nuncy Rembert- Shuttle Transportation

Amanda Rylant- Sessions/Schedules

Marcus Vandiver- Audio/Visual Contact

Shanthia Washington- Assistant Superintendent

# ALSDE MEGA Team

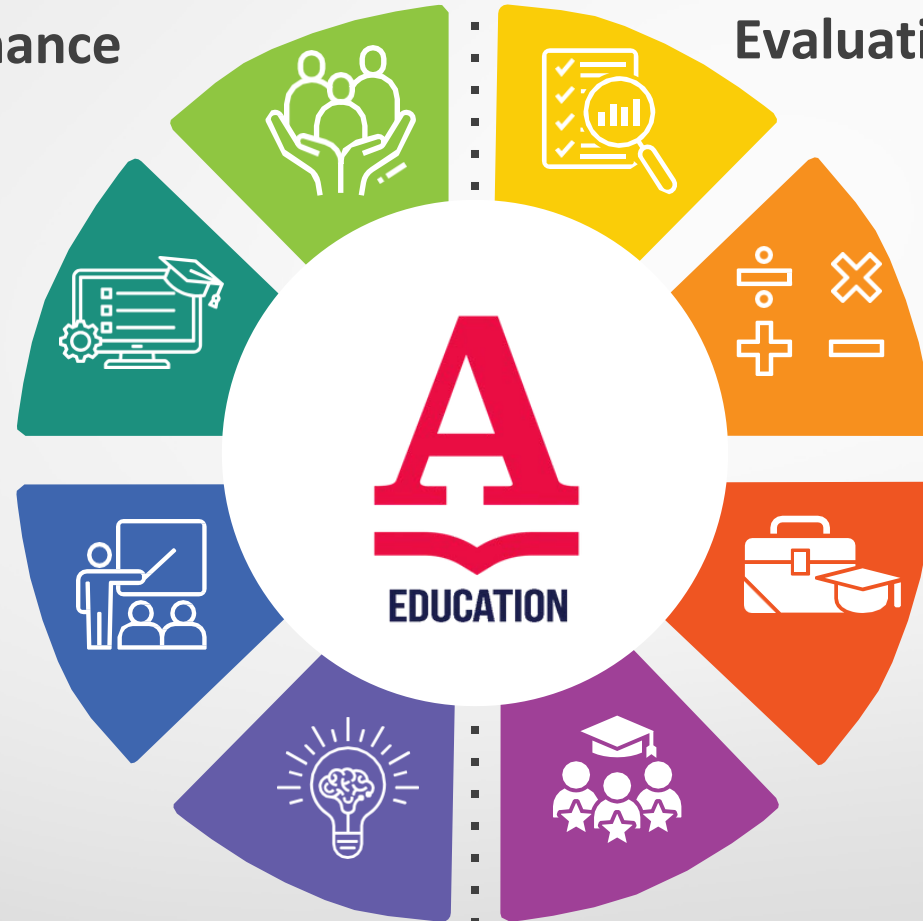
Administration and Finance

Support Services

Legal

Teaching and  
Leading

Communications



Evaluation, Accountability, and Support

Student Learning

Office of Math  
Improvement

Career Technical  
Education/Workforce  
Development

PowerSchool



# Timeline

## August 2025

Debrief (Review evaluations)

## December- January 2026

Invitation for external proposals  
Registration Opens  
Hotel Reservations Open

## May-June 2026

Schedule Published to Public  
MEGA App deployed

## October-December 2025

Logo & theme  
Keynote speaker  
Initiate Contracts  
Internal sessions determined

## February- April 2026

Review & approval of external proposals  
Preliminary Schedule posted to Website  
All Approved Sessions Scheduled

The background features a dark blue field with several overlapping geometric shapes, including triangles and parallelograms in shades of blue, purple, and red. Two large arrows point towards the right: a light blue one in the upper right and a red one in the lower right. The text is arranged diagonally across the center, following the path of these arrows. At the top, a white outline of the state of Alabama is positioned above the text 'MEGA 2025'. At the bottom, another white outline of Alabama is positioned below the red arrow.

**MEGA 2025**

# **ELEVATING ALABAMA'S FUTURE**

Leading with Vision, Inspiring with Action